



NAME:

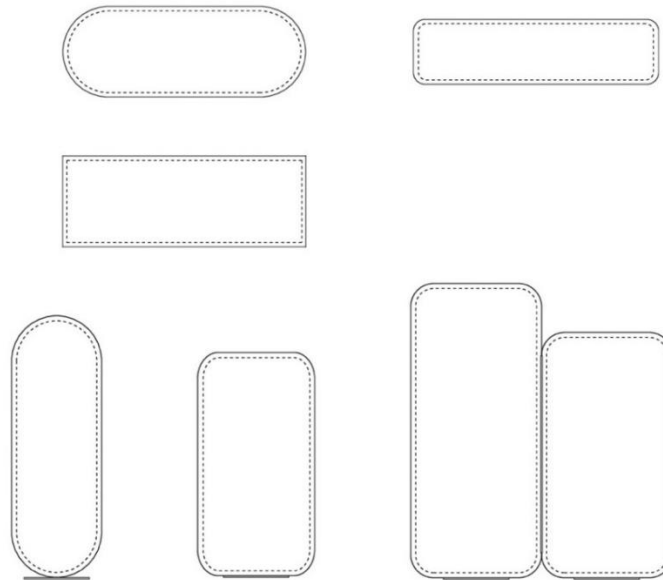
T-LIGHT TAILOR MADE

DESCRIPTION:

Sound-absorbing panel/system, sartorial workmanship, model TAILOR MADE, composed of light structure and multilayer fiber stratigraphy sound-absorbing polyester thickness 3 cm (1.2 in)

APPLICATIONS:

- Wall with velcro or magnets
- Desk
- Ceiling with velcro or magnets
- Suspended ceiling
- Baffles with magnets or cables
- Freestanding, totem



DIMENSIONS:

- Eclair (Desk): L **60 | 80 | 100 | 120 | 140 | 160 | 180** x H **40** | **55** x THK **3** cm
L **23.6 | 31.5 | 39.4 | 47.2 | 55.1 | 63 | 70.9** x H **15.75** | **21.65** x THK **1.18** in
- Pavillion (Desk): L **80** x H **55** x SP **3** cm
L **31.5** x H **21.65** x THK **1.2** in
- Baffle: L **80 | 100 | 120 | 140 | 160 | 180 | 200** x H **40** | **60** x THK **3** cm
L **31.5 | 39.4 | 47.2 | 55.1 | 63 | 70.9 | 78.7** x H **15.75** | **23.6** x THK **1.2** in
- Freestanding (Rectangle): L **80** x H **122** x THK **3** cm
L **31.5** x H **35.7** x THK **1.2** in
L **100** x H **120** x THK **3** cm
L **39.3** x H **48** x THK **1.2** in
L **120** x H **160** x THK **3** cm
L **48** x H **62.9** x THK **1.2** in
L **120** x H **180** x THK **3** cm
L **48** x H **70.8** x THK **1.2** in
- Freestanding (with zip): L **200** x H **162** x THK **3** cm
L **78.7** x H **63.8** x THK **1.2** in
- Freestanding (Keystone): L **80** x H **162** x SP **3** cm
L **31.5** x H **63.8** x THK **1.2** in
L **120** x H **162** x SP **3** cm
L **47.2** x H **63.8** x THK **1.2** in

NOTE: Customizable panels, further shapes and sizes available on request

WEIGHT:

- **3 kg/m²**
- **0.62 lb/ft²**

NOTE: *Further thickness available on request*

COMPOSITION:

- Main core: Sound-absorbing material made of 100% recycled material, of polyester fibers

Reaction to fire: B-s2, d0

Smoke class: F1

Certificate: Oekotex

- Finishing CAT **A**:

- **Trevira CS** - 100% polyester

Reaction to fire: **Class 1**

Certificate: **Oekotex**

- **PETfabric** – 100% recycled polyester

Reaction to fire: **Class 1**

Certificate: **Oekotex**

- **PETcolor** - 100% PET, FR recycled polyester + GRS

Reaction to fire: **Class 1**

- **ECOfelt** - 90% wool, 10% polyester

- **PETfelt** - 100% PET – From post-consumer plastic bottles

- **Velvet** - 100% polyester

- Finishing CAT **B**:

- **Tweed** - 75% wool, 25% polyamide

Reaction to fire: **Class 1**

- **Trace** - 100% Trevira CS FR, FR polyester

Reaction to fire: **Class 1**

Certificate: **Oekotex**

RECYCLABILITY:

Recycled material panel recyclable at the end of his life,
without dividing soul and finish

MAINTENANCE:

Cleanable panel with specific detergents

CERTIFICAZIONI:

• **CLASSE REAZIONE AL FUOCO:**

B-s2, d0



• **MARCATURA CE:**

B-s1, d0



• **CERTIFICAZIONI ECOLOGICHE:**

GREENGUARD
GREENGUARDGOLD



VOC EMISSION TEST Indoor Air Comfort GOLD



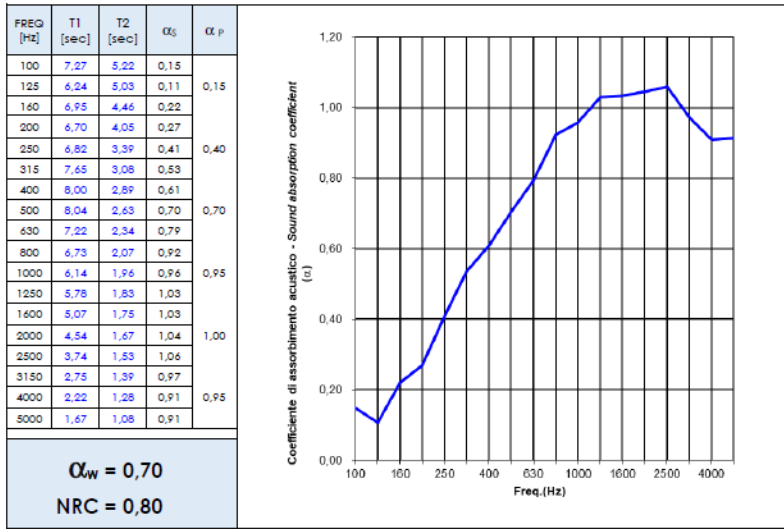
• **REPORT DI FONDOASSORBIMENTO:**

UNI EN ISO 354: 2003
UNI EN ISO 11654: 1998



T-LIGHT (SP 3 cm):

| | |
|--|---|
| Elemento in prova Tested element | TAILOR MADE - 3cm |
| Descrizione del campione Sample description | Vedere § "Descrizione del campione in prova" del presente Report Montaggio tipo A secondo EN 354 Ssee § "Tested sample description" of this Report Type A mounting according to EN 354 |
| Superficie del campione Sample surface | 11,2 m ² |



CAT A



COMPOSITION

100% Trevira CS FR, poliestere Fr
100% Trevira FR CS, polyester Fr



Trevira CS.



Light grey 611T Moka 516 Beige 532 Camel 533 Tuscan brown 534 Brown sugar 569



Yellow 53 Carrot 66 Tiger eye 119 Summer 133 Brick 572 Orange 120



Red 231 Bordeaux 236 Red wine 234 Lavender 175 Fuchsia 173 Purple 262



Lime 462 Green tea 425 Apple Green 463 Office green 443 Grass 464 Olive 426



Forest green 496 Dark mud 571 Pearl grey 643 Light blue 386 Azuleja 367 Capri 379



Turquoise 366 Peacock blue 411 Pastel blue 380 Steel blue 263 Iceberg 377 Queen blue 411



Sapphire 331 Office blue 332T Dark blue 334T Midnight blue 333T Quartz grey 636 Grey 629



Old silver 625 Taupe 607 White 999 Black 651



COMPOSITION

100% poliestere FR riciclato + GRS
100% recycled polyester + GRS



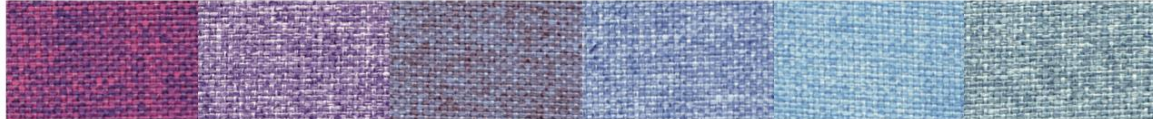
PETfabric.



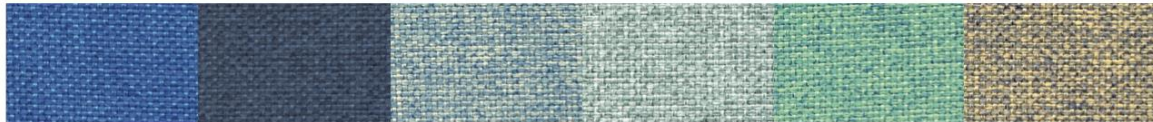
Jacket 4559 Warm grey 4560 Golden brown 456T Chestnut 4562 Brown 4558 Sand 4513



Canarino 4055 Cachi 4056 Orangina 4105 Brick 4211 Dark Red 4210 Bordeaux 4213



Party 4254 Lilac 4253 Dreamy 4363 Sky 4360 Anima 4362 Light blue 4361



Villa 4310 Blue 4313 Azure 4311 Morning green 4467 Sailing 4465 Camo 4312



Sage 4466 Mesh green 4468 Bright green 4464 Brilliant green 4460 Underbrush 4462 Tropical 4461



Neutral grey 4511 Light grey 4613 Ash 4614 Suit grey 4615 Road 4616



COMPOSITION

100% PET, poliestere FR riciclato + GRS
100% PET, recycled polyester + GRS



PETcolor.



White 2999 Milk 2509 Beige 2503 Camel 2504 Deer 2510 Sierra 2557



Yellow 2051 Orange 2104 Papaya 2103 Red 2201 Mud 2552 Dark chocolate 2556



Brick 2555 Palazzo red 2206 Ossalide 2151 Bordeaux 2203 Malva 2251 Blueberry 2252



Pistachio 2451 Green leaf 2452 Forest 2459 Peacock 2402 Sugar 2357 Poudre 2358



Ice 2612 Light blue 2351 Greece 2308 Van Gogh 2301 Midnight 2309 Blue romance 2303



Grey 2602 Infinity 2307 Rock Grey 2603 City grey 2604 Black 2651

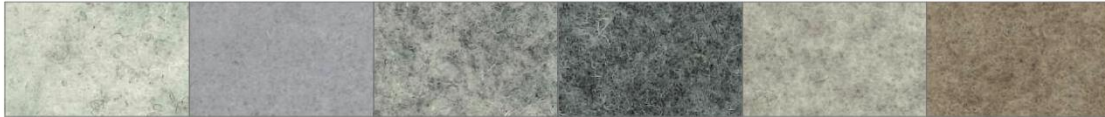


COMPOSITION

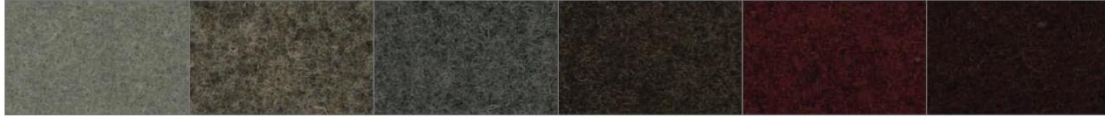
90% lana naturale, 10% poliestere
90% natural wool, 10% polyester



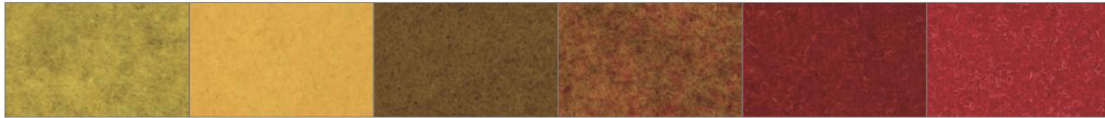
ECOfelt.



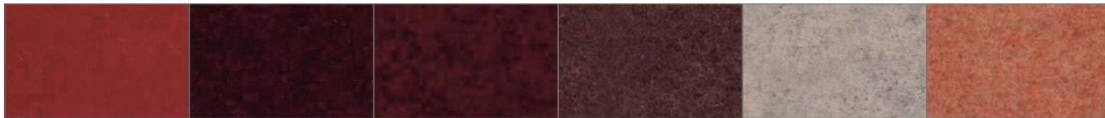
Ghost white 955E Chalk 327 Grey 953E Concrete 903 Beige 952 Caramel 332E



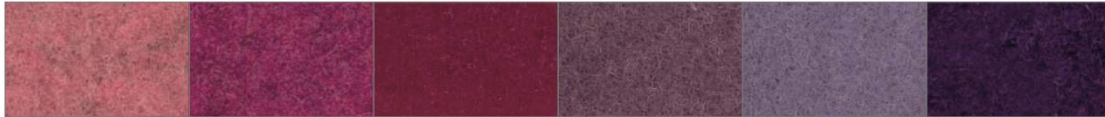
Mushroom 325 Chocolate 352 Taupe 511 Brown 605 Rust 604 Corten 516



Yellow 34 Egg 980 Mustard 54 Cob orange 997 Orange 971 Coral 336



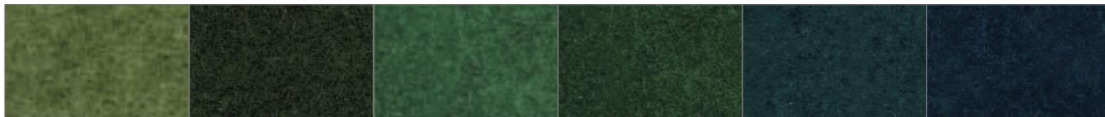
Red 5 Pompei 47 Bordeaux 192 Marsala 973 Quartz rose 940 Salmon 317



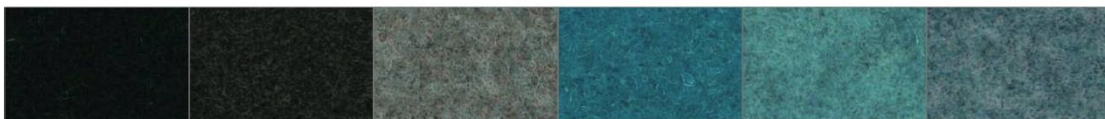
Bubble pink 53 Pink 988 Marilyn 323 Mauve 601 Agate 919 Violet 921



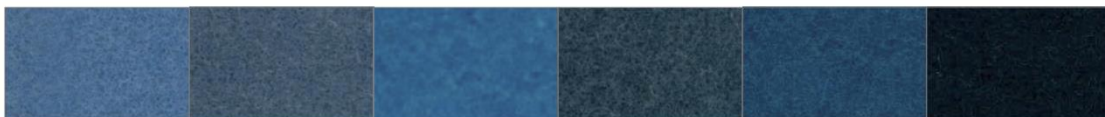
Purple 508 Barolo 602 Grape 603 Fresh air 976 Salvia green 334E Acid green 611E



Cashmere green 89 Grassland 937 Tea Green 345 Leaf Green 910 Lagoon 608 Peacock blue 962



Black forest 77 Dark musk 22E Mineral Blue 311 Biggest Splash 41 Capri 341 Avio 333E



Light blue 914 Blue yonder 200 Azuleja 318 Moonstone 512 Skyblue 942 Nynph 972



Honolulu blue 607 Blue 193 Blue Klein 322 Deep sea blue 963 Ink 329 Dark grey 923



COMPOSITION

96% PET - Bottiglie di plastica postconsumo.
96% PET - Recycled plastic bottles.



PETfelt.



Ash 703 Fog 953P Milk 955P Beige 16 Tuscan brown 20 Mud 19



Pale yellow 41 Alabaster 32 Yellow 3 Duck Orange 43 Orange 9 Dark Orange 14



Red 6 Ruby red 27 Bordeaux 15 Pastel pink 37 Pink 17 Wisteria pink 36



Barbie 113 Fuchsia 10 Sangria 30 Grapes 23 Purple 11 Raspberry 47



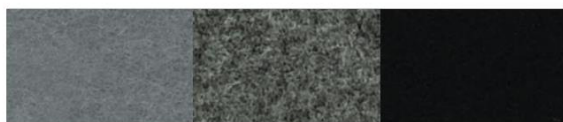
Opal 33 Celadon 39 Water green 2 Kiwy 28 Acid green 7 La salle green 12



Jungle green 31 Grey green 22 Egg blue 38 Light blue 8 Blue 13 Azure 1



Summer night 21 Charm blue 44 Pacific blue 29 Dark blue 5 Midnight 905 Rhino 903



Grey 4 Street 529 Rich black 18



COMPOSITION

100% poliester
100% polyester



Velvet.



Beige 104

Mauve 23V

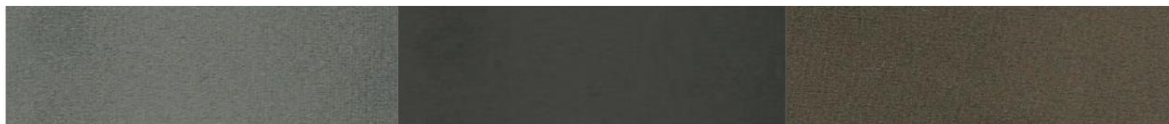
Marsala 80



Yellow 26

Cherry 10V

Bordeaux 90



Taupe 205

Graphite 617

Brown 100



Bright green 12V

Salvia green 56

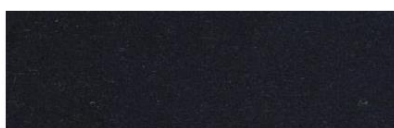
Lagoon 15V



Grey 616

Avio 16V

Deep sea blue 14V



Dark blue 666

CAT B



COMPOSITION

75% lana, 25% poliammide
75% wool, 25% polyamide



Tweed.



Almond 505

Sand 502

Rose 503

Brown 504

Coffee 551

Chestnut 552



Banana 51

Dark gold 52

Mandarin 102

Cadmium 101

Orange 2105

Terra di Siena 103



Pistachio 451

Pond 2457

Foliage 452

Racing green 453

Teal blue 454

Blue 303



Aqua green 455

Air blue 351

River 2460

Grey blue 301

Orchid 251

Purple 252



Ash grey 601

Melting grey 2606

Rock grey 602

Old brown 553

Dark grey 603

Night blue 302



Pink 152

Red 211

Antique ruby 201

Berry 202

Full black 651



COMPOSITION

100% Trevira CS FR, poliestere Fr
100% Trevira FR CS, polyester Fr



Trace.



Warm grey 9607

Cold grey 9610

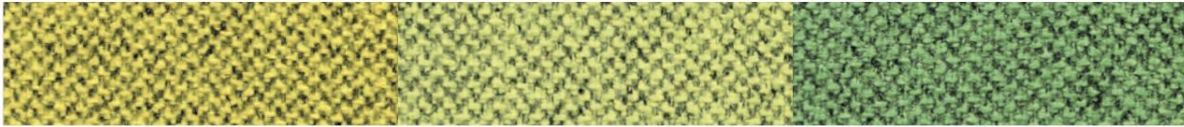
Formal grey 9608



Sea 9402

Blue 9302

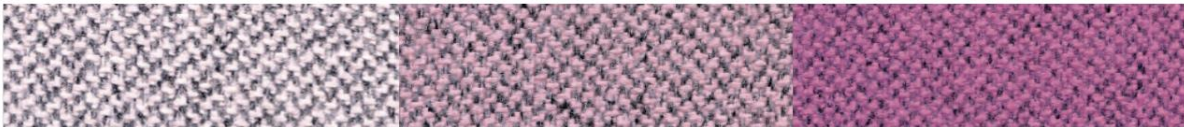
Ocean 9403



Yellow 9052

Pistachio 9452

Green leaf 9455



Cloud pink 9155

Pink 9154

Blossom 9156



Salmon 9157

Strawberry 9203