

NAME:

ECodesk

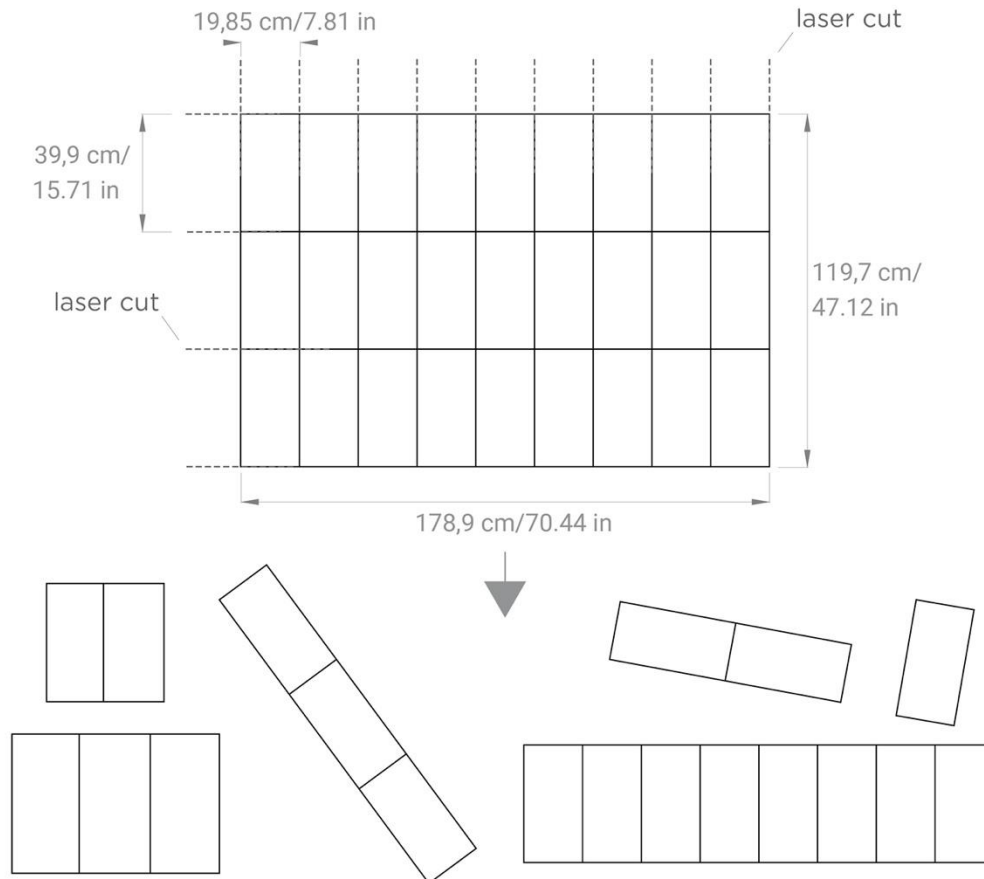
DESCRIPTION:

Thermobonded sound-absorbing monomateric panel

APPLICATIONS:

- Desk: H **39,9** | **59,9** | **79,8** cm – With brackets
- Freestanding, totem with brackets
- Wall with velcro or magnets
- Ceiling with velcro or magnets
- Baffle with magnets or cables

ECodesk 40:



DIMENSIONS:

• L/H 19,85 | 39,75 | 59,6 | 79,45 | 99,3 | 119,25 | 139,1 | 158,95 | 178,9 x L/H 39,9 | 59,9 | 79,8 | 119,7

x THK 2 | 3,5 cm

• L/H 7,81 | 15,65 | 23,46 | 31,28 | 39,1 | 46,95 | 54,76 | 62,58 | 70,44 x L/H 15,71 | 23,58 | 31,42 | 47,16

x THK 0,79 | 1,38 in

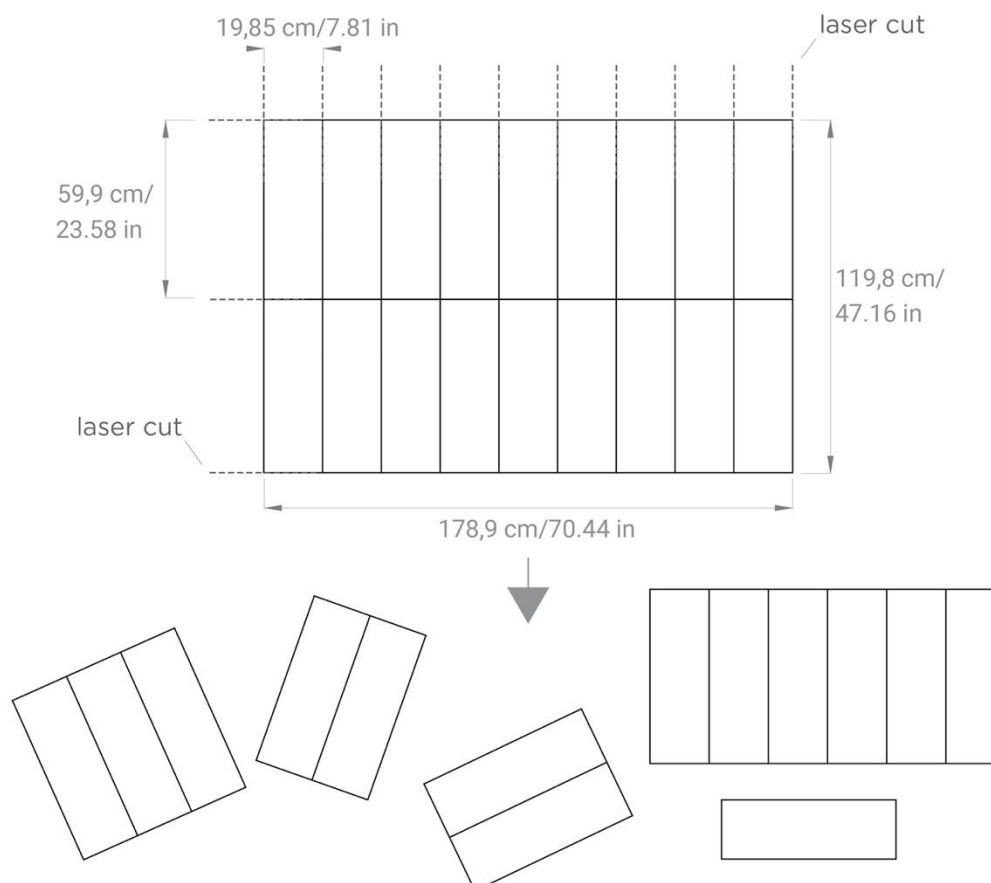
NOTE: Panels may have differences in thickness due to the type of material

WEIGHT:

• 3 Kg/m²

• 0.62 lb/ft²

ECodesk 60:



DIMENSIONS:

• L/H 19,85 | 39,75 | 59,6 | 79,45 | 99,3 | 119,25 | 139,1 | 158,95 | 178,9 x L/H 59,9 | 119,8
x THK 2 | 3,5 cm

• L/H 7.81 | 15.65 | 23.46 | 31.28 | 39.1 | 46.95 | 54.76 | 62.58 | 70.44 x L/H 23.58 | 47.16
x THK 0.79 | 1.38 in

NOTE: Panels may have differences in thickness due to the type of material

WEIGHT:

- 3 Kg/m²
- 0.62 lb/ft²

COMPOSITION:

- Soul: sound absorbing material made of 100% recycled material, polyester fibers

Reaction to fire: B-s2, d0

Smoke class: F1

Certificate: Oekotex

- Finishing CAT **A**:

- **Trevira CS** - 100% polyester

Reaction to fire: **Class 1**

Certificate: **Oekotex**

- **PETfabric** – 100% recycled polyester

Reaction to fire: **Class 1**

Certificate: **Oekotex**

- **PETcolor** - 100% PET, FR recycled polyester + GRS

Reaction to fire: **Class 1**

- **ECOfelt** - 90% wool, 10% polyester

- **PETfelt** - 100% PET – From post-consumer plastic bottles

- **Velvet** - 100% polyester

- Finishing CAT **B**:

- **Tweed** - 75% wool, 25% polyamide

Reaction to fire: **Class 1**

- **Trace** - 100% Trevira CS FR, FR polyester

Reaction to fire: **Class 1**

Certificate: **Oekotex**

RECYCLABILITY:

Recyclable material panel recyclable at the end of his life, without having to divide soul and finishing

MAINTENANCE:

Cleanable panel with specific detergents

CERTIFICATIONS:

• **FIRE REACTION CLASS:**

B-s2, d0



• **CE MARK:**

B-s1, d0



• **GREEN LABELS:**

GREENGUARD
GREENGUARDGOLD



• **VOC EMISSION TEST**

Indoor Air Comfort GOLD



• **SOUND ABSORPTION REPORT:**

UNI EN ISO 354: 2003
UNI EN ISO 11654: 1998

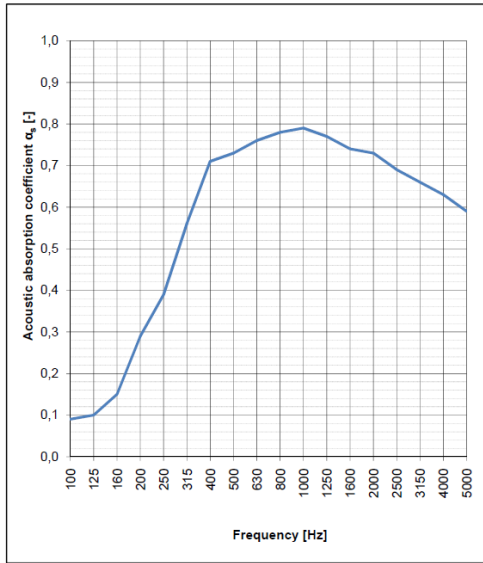


ECodesk:

Sample description: Thermobounded sound absorbing panel, Model " ECodesk"
Mounting Type: A

Sample area: 10.80 m²
Reverberation room volume: 161.3 m³

f [Hz]	α_s [-]
Frequency	Acoustic absorption coefficient values
100	0.09
125	0.10
160	0.15
200	0.29
250	0.39
315	0.56
400	0.71
500	0.73
630	0.76
800	0.78
1000	0.79
1250	0.77
1600	0.74
2000	0.73
2500	0.69
3150	0.66
4000	0.63
5000	0.59



Evaluation based on laboratory measurement results by means of a technical method.

CAT A



COMPOSITION

100% Trevira CS FR, poliestere Fr
100% Trevira FR CS, polyester Fr



Trevira CS.



Light grey 611T Moka 516 Beige 532 Camel 533 Tuscan brown 534 Brown sugar 569



Yellow 53 Carrot 66 Tiger eye 119 Summer 133 Brick 572 Orange 120



Red 231 Bordeaux 236 Red wine 234 Lavender 175 Fuchsia 173 Purple 262



Lime 462 Green tea 425 Apple Green 463 Office green 443 Grass 464 Olive 426



Forest green 496 Dark mud 571 Pearl grey 643 Light blue 386 Azuleja 367 Capri 379



Turquoise 366 Peacock blue 411 Pastel blue 380 Steel blue 263 Iceberg 377 Queen blue 411



Sapphire 331 Office blue 332T Dark blue 334T Midnight blue 333T Quartz grey 636 Grey 629



Old silver 625 Taupe 607 White 999 Black 651



COMPOSITION

100% poliestere FR riciclato + GRS
100% recycled polyester + GRS



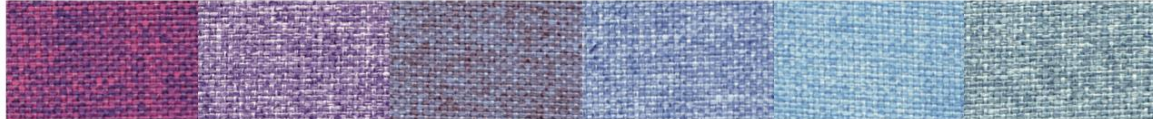
PETfabric.



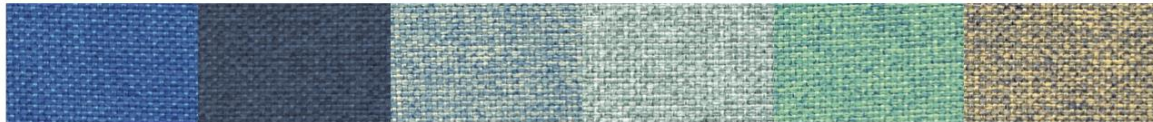
Jacket 4559 Warm grey 4560 Golden brown 456T Chestnut 4562 Brown 4558 Sand 4513



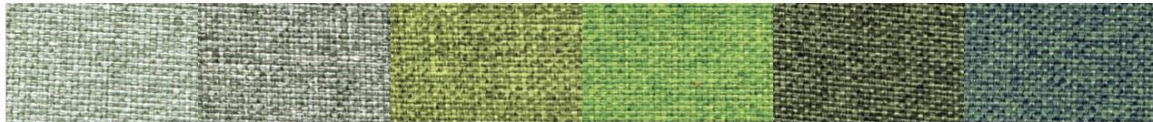
Canarino 4055 Cachi 4056 Orangina 4105 Brick 4211 Dark Red 4210 Bordeaux 4213



Party 4254 Lilac 4253 Dreamy 4363 Sky 4360 Animae 4362 Light blue 4361



Villa 4310 Blue 4313 Azure 4311 Morning green 4467 Sailing 4465 Camo 4312



Sage 4466 Mesh green 4468 Bright green 4464 Brilliant green 4460 Underbrush 4462 Tropical 4461



Neutral grey 4511 Light grey 4613 Ash 4614 Suit grey 4615 Road 4616



COMPOSITION

100% PET, poliester FR riciclato + GRS
100% PET, recycled polyester + GRS



PETcolor.



White 2999

Milk 2509

Beige 2503

Camel 2504

Deer 2510

Sierra 2557



Yellow 2051

Orange 2104

Papaya 2103

Red 2201

Mud 2552

Dark chocolate 2556



Brick 2555

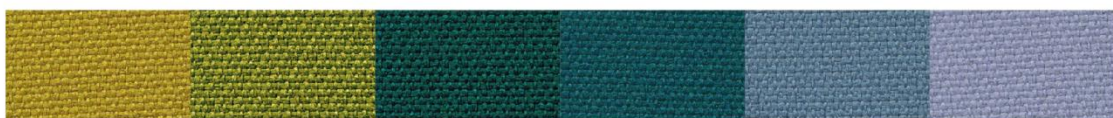
Palazzo red 2206

Ossalide 2151

Bordeaux 2203

Malva 2251

Blueberry 2252



Pistachio 2451

Green leaf 2452

Forest 2459

Peacock 2402

Sugar 2357

Poudre 2358



Ice 2612

Light blue 2351

Greece 2308

Van Gogh 2301

Midnight 2309

Blue romance 2303



Grey 2602

Infinity 2307

Rock Grey 2603

City grey 2604

Black 2651

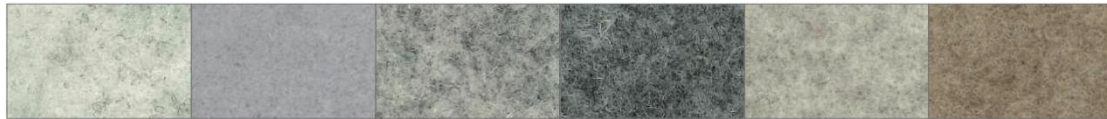


COMPOSITION

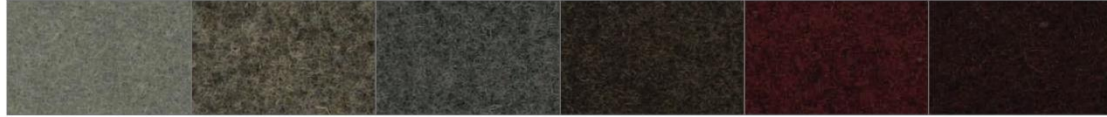
90% lana naturale, 10% poliestere
90% natural wool, 10% polyester



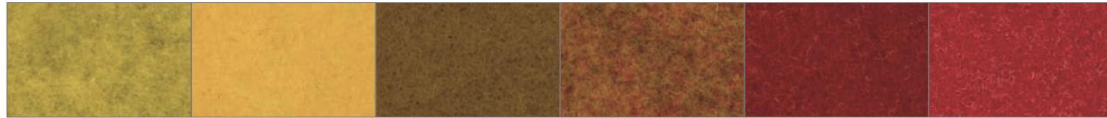
ECOfelt.



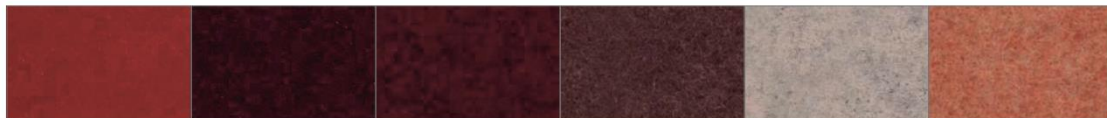
Ghost white 955E Chalk 327 Grey 953E Concrete 903 Beige 952 Caramel 332E



Mushroom 325 Chocolate 352 Taupe 511 Brown 605 Rust 604 Corten 516



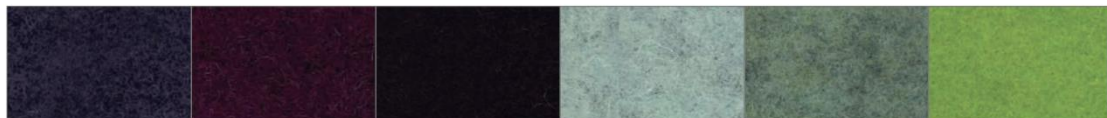
Yellow 34 Egg 980 Mustard 54 Cob orange 997 Orange 971 Coral 336



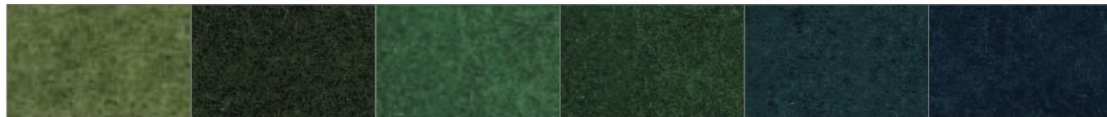
Red 5 Pompei 47 Bordeaux 192 Marsala 973 Quartz rose 940 Salmon 317



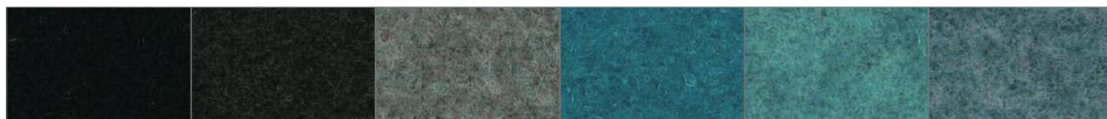
Bubble pink 53 Pink 988 Marilyn 323 Mauve 601 Agate 919 Violet 921



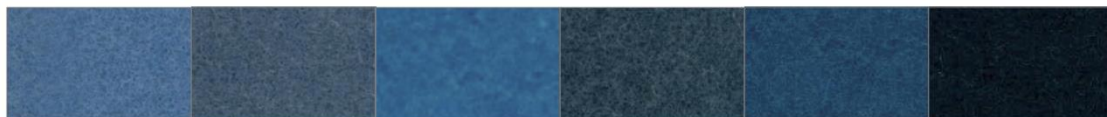
Purple 508 Barolo 602 Grape 603 Fresh air 976 Salvia green 334E Acid green 611E



Cashmere green 89 Grassland 937 Tea Green 345 Leaf Green 910 Lagoon 608 Peacock blue 962



Black forest 77 Dark musk 22E Mineral Blue 311 Biggest Splash 41 Capri 341 Avio 333E



Light blue 914 Blue yonder 200 Azuleja 318 Moonstone 512 Skyblue 942 Nynph 972



Honolulu blue 607 Blue 193 Blue Klein 322 Deep sea blue 963 Ink 329 Dark grey 923



COMPOSITION

96% PET - Bottiglie di plastica postconsumo.
96% PET - Recycled plastic bottles.



PETfelt.



Ash 703 Fog 953P Milk 955P Beige 16 Tuscan brown 20 Mud 19



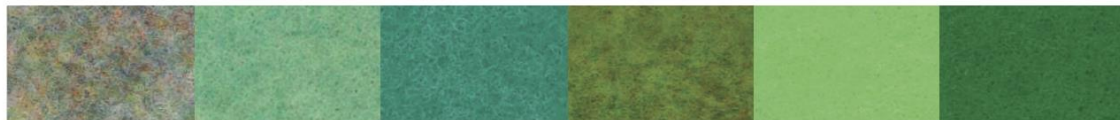
Pale yellow 41 Alabaster 32 Yellow 3 Duck Orange 43 Orange 9 Dark Orange 14



Red 6 Ruby red 27 Bordeaux 15 Pastel pink 37 Pink 17 Wisteria pink 36



Barbie 113 Fuchsia 10 Sangria 30 Grapes 23 Purple 11 Raspberry 47



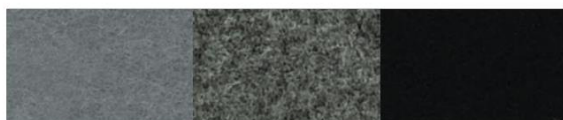
Opal 33 Celadon 39 Water green 2 Kiwy 28 Acid green 7 La salle green 12



Jungle green 31 Grey green 22 Egg blue 38 Light blue 8 Blue 13 Azure 1



Summer night 21 Charm blue 44 Pacific blue 29 Dark blue 5 Midnight 905 Rhino 903



Grey 4 Street 529 Rich black 18



COMPOSITION

100% poliester
100% polyester



Velvet.



Beige 104

Mauve 23V

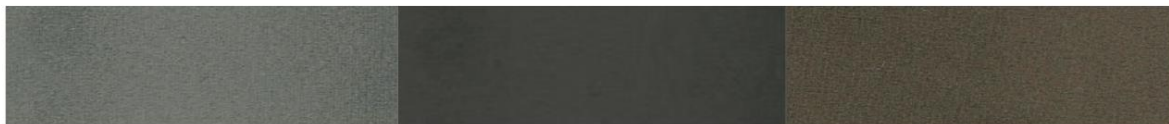
Marsala 80



Yellow 26

Cherry 10V

Bordeaux 90



Taupe 205

Graphite 617

Brown 100



Bright green 12V

Salvia green 56

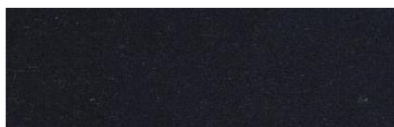
Lagoon 15V



Grey 616

Avio 16V

Deep sea blue 14V



Dark blue 666

CAT B



COMPOSITION

75% lana, 25% poliammide
75% wool, 25% polyamide



Tweed.





COMPOSITION

100% Trevira CS FR, poliestere Fr
100% Trevira FR CS, polyester Fr



Trace.



Warm grey 9607

Cold grey 9610

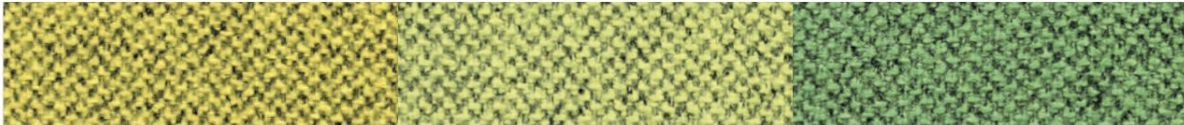
Formal grey 9608



Sea 9402

Blue 9302

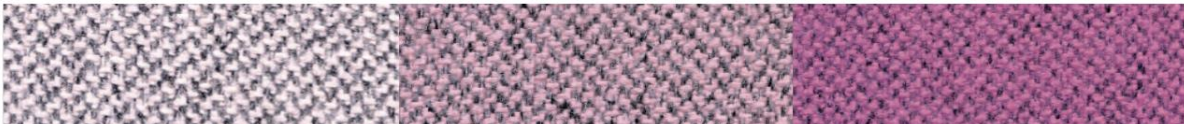
Ocean 9403



Yellow 9052

Pistachio 9452

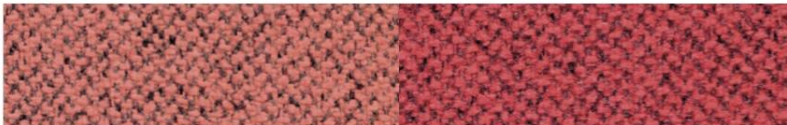
Green leaf 9455



Cloud pink 9155

Pink 9154

Blossom 9156



Salmon 9157

Strawberry 9203