



NOME:

ECOdesk

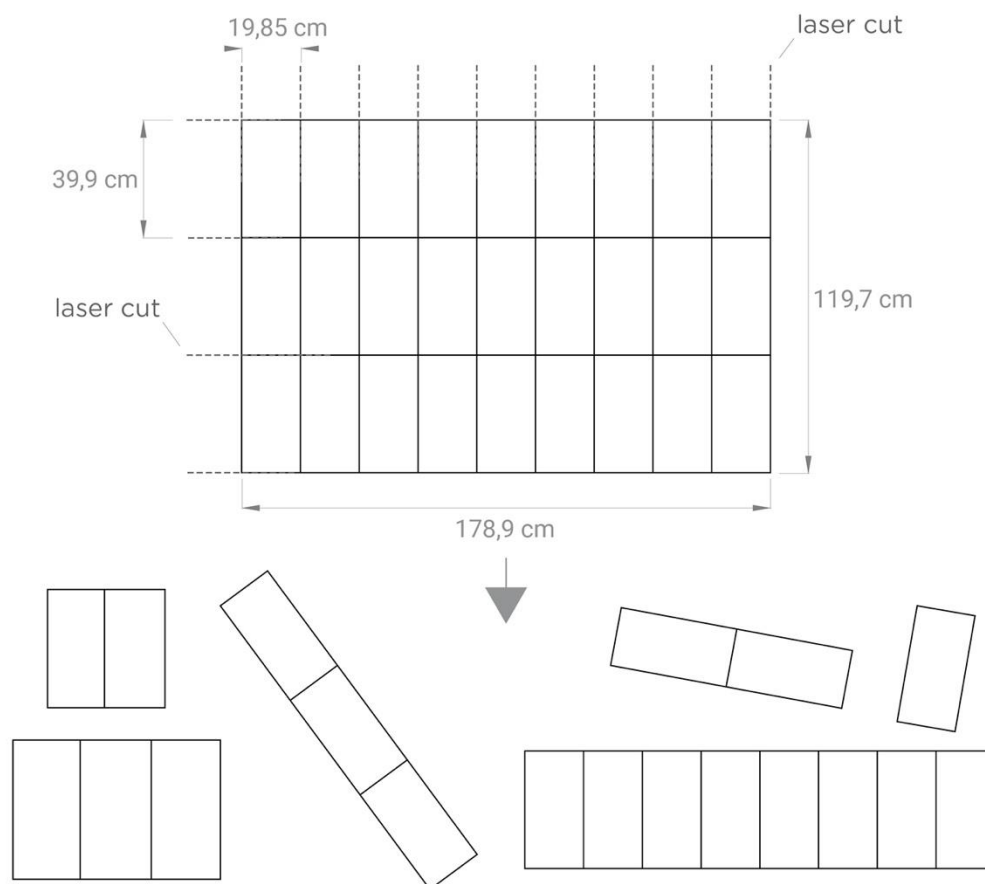
DESCRIZIONE:

Pannello monomaterico fonoassorbente termoformato

APPLICAZIONI:

- Scrivania: H **39,9 | 59,9 | 79,8** cm - Con staffe di supporto
- Autoportante, totem con staffe
- Muro con velcro o calamite
- Soffitto con velcro o calamite
- Baffle con calamite o cavetti

ECodesk 40:



DIMENSIONI:

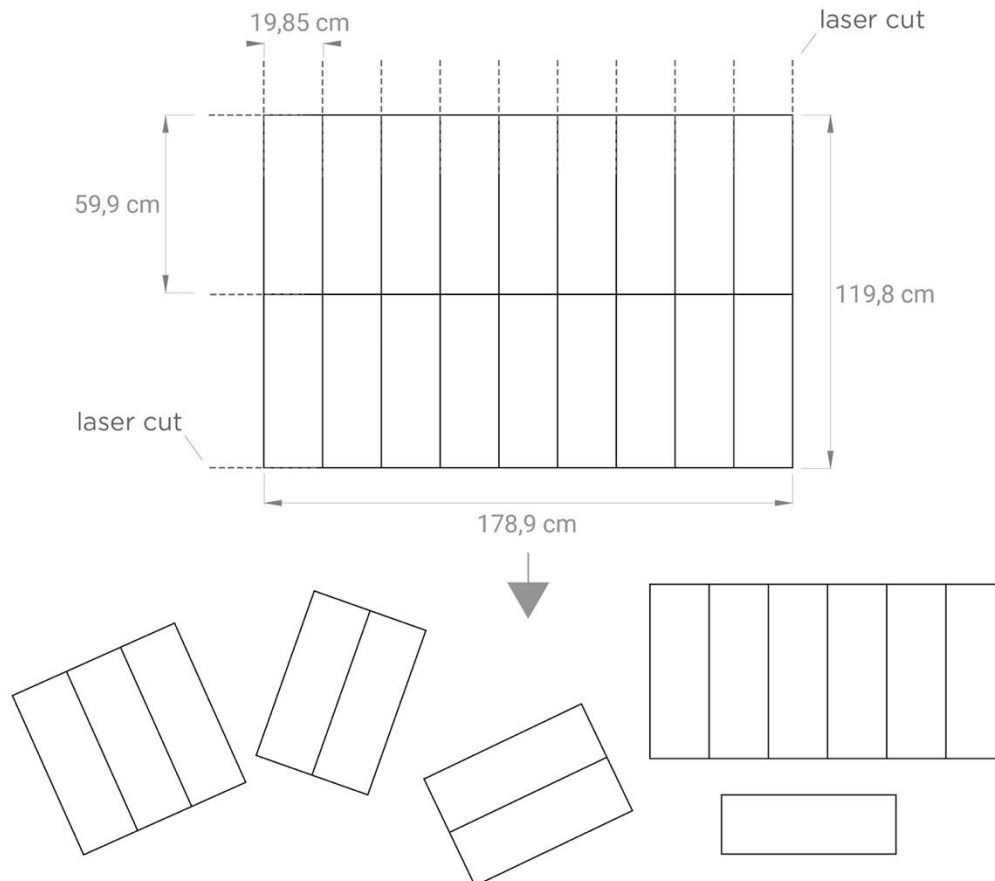
- L/H 19,85 | 39,75 | 59,6 | 79,45 | 99,3 | 119,25 | 139,1 | 158,95 | 178,9 x L/H 39,9 | 79,8 | 119,7 x THK 2 | 3,5 cm

NOTE: *I pannelli potranno avere differenze di spessore dovute alla tipologia del materiale*

PESO:

- 3 Kg/m²

ECodesk 60:



DIMENSIONI:

- L/H 19,85 | 39,75 | 59,6 | 79,45 | 99,3 | 119,25 | 139,1 | 158,95 | 178,9 x L/H 59,9 | 119,8 x THK 2 | 3,5 cm

NOTE: *I pannelli potranno avere differenze di spessore dovute alla tipologia del materiale*

PESO:

- 3 Kg/m²

COMPOSIZIONE:

- Anima: materiale fonoassorbente composto da materiale riciclato 100%, fibre in poliestere

Reazione al fuoco: B-s2, d0

Classe fumo: F1

Certificato: Oekotex

- Finiture:

- **Trevira CS** - 100% poliestere

Reazione al fuoco: **Class 1**

Certificato: **Oekotex**

- **ECOfelt** - 90% lana, 10% poliestere

- **PETfelt** - 100% PET

RICICLABILITÀ:

Pannello di materiale riciclato e riciclabile alla fine della sua vita, senza dover separare anima e finitura

MANUTENZIONE:

Pannello pulibile con detergenti specifici

CERTIFICAZIONI:

• **CLASSE REAZIONE AL FUOCO:**

B-s2, d0



• **MARCATURA CE:**

B-s1, d0



• **CERTIFICAZIONI ECOLOGICHE:**

GREENGUARD
GREENGUARDGOLD



• **REPORT DI FONDOASSORBIMENTO:**

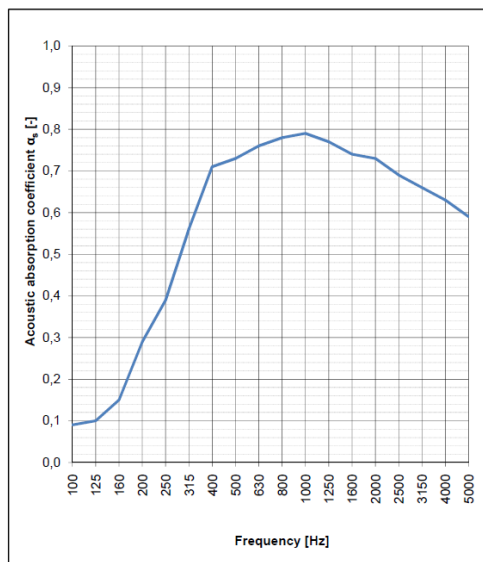
UNI EN ISO 354: 2003
UNI EN ISO 11654: 1998



Sample description: Thermobounded sound absorbing panel, Model "ECOdesk"
Mounting Type: A

Sample area: 10.80 m²
Reverberation room volume: 161.3 m³

f [Hz]	α_s [-]
Frequency	Acoustic absorption coefficient values
100	0.09
125	0.10
160	0.15
200	0.29
250	0.39
315	0.56
400	0.71
500	0.73
630	0.76
800	0.78
1000	0.79
1250	0.77
1600	0.74
2000	0.73
2500	0.69
3150	0.66
4000	0.63
5000	0.59



Evaluation based on laboratory measurement results by means of a technical method.



Apple green 463



Yellow 53



Light blue 386



Turquoise 366



Beige 532



White 999



Green tea 425



Carrot 66



Capri 379



Iceberg 377



Camel 533



Light grey 611T



Grass 464



Orange 120



Pastel blue 380



Queen blue 378



Tuscan brown 534



Pearl grey 643



Olive 426



Red 231



Steel blue 263



Sapphire 331



Tiger eye 119



Grey 629



Office green 443



Brick 572



Lavender 175



Office blue 332T



Brown sugar 569



Quartz grey 636



Forest green 496



Bordeaux 236



Red wine 234



Dark blue 334T



Taupe 607



Old silver 625



Peacock blue 411



Fuchsia 173



Purple 262



Midnight blue 333T



Dark mud 571



Black 651



Beige 952



Yellow 34



Quartz rose 940



Acid green 611E



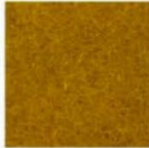
Fresh air 976



Ghost white 955



Caramel 332E



Mustard 54



Salmon 317



Cashmere green 89



Salvia green 334E



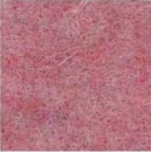
Chalk 327



Mushroom 325



Cob orange 997



Blossom pink 335



Leaf green 910



Light blue 914



Grey 953



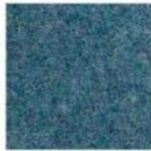
Chocolate 352



Orange 971



Pink 988



Avio 333E



Sky blue 942



Mineral blue 311



Taupe 511



Red 5



Violet 921



Lagoon 608



Blue yonder 200



Moonstone 512



Brown 605



Marsala 973



Purple 508



Peacock blue 962



Honolulu blue 607



Ink 329



Dark musk 22



Bordeaux 192



Grape 603



Blue 193



Deep sea blue 963



Dark grey 923

				
Grey 4	Yellow 3	Pink 17	Kiwy 28	Light blue 8
				
Beige 16	Orange 9	Opal 33	Acid green 7	Blue 13
				
Alabaster 32	Dark Orange 14	Fuchsia 10	Water green 2	Azure 1
				
Tuscan brown 20	Red 6	Purple 11	La salle green 12	Dark blue 5
				
Mud 19	Bordeaux 15	Grapes 23	Jungle green 31	Summer night 21
				
Rich black 18	Sangria 30	Pastel pink 37	Grey green 22	Pacific blue 29
				
Pale yellow 41	Ruby red 27	Wisteria pink 36	Celadon 39	Egg blue 38