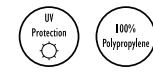
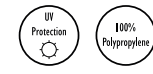


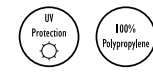
PLASTICHE AHORA



PLASTICHE EXITO



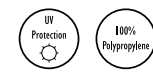
PLASTICHE GOSSIP



PLASTICHE QUICK



PLASTICHE CARIOCA



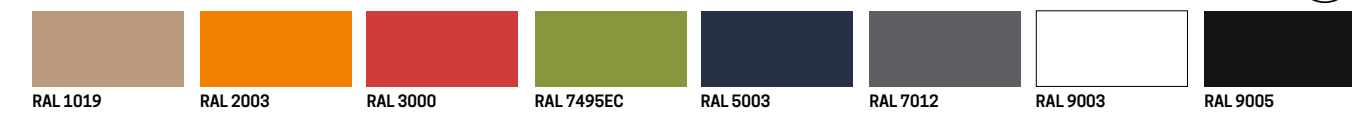
PLASTICHE ZAIRA



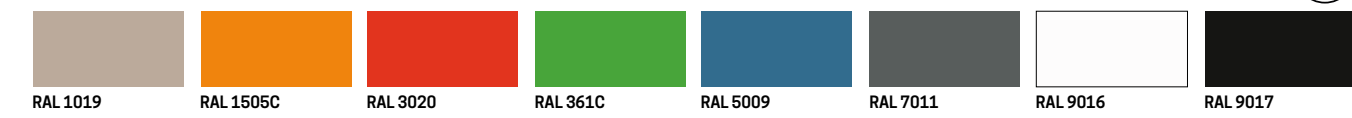
PLASTICHE CITY



PLASTICHE FLIRT



PLASTICHE LOL



TECNICA

CATEGORIA/CATEGORY P
POLO



P26 Mandorla

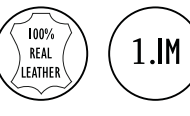
Reazioni al fuoco - Fire resistance*:
British standard BS 5852 Part I (1979)
Imo FTP, Part 0-Resolution A.652 (16)
TB 117-A11602013.2013
*Will also pass other flammability standards.
Flame retardant performance is dependent upon the foam used.

Spessore - Thickness
0,9/1,0 mm

Origine animale - Origin
Bovine - Raw Hides

Peso - weight
120 g/m² ± 5%

Martindale:
≥ 50,000 cicli - cycles



P11 Bordeaux P12 Rosso P13 Nocciola



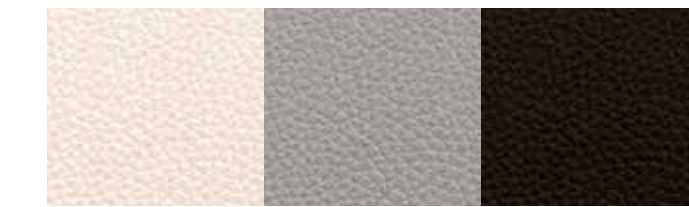
P14 Beige P15 Tortora P16 Castagno



P17 Salvia P18 Abete P19 Sottobosco



P20 London Sky P21 Petrolio P22 Blu



P23 Bianco P24 Grigio chiaro P25 Nero



Zona Industriale 64046 Montorio al Vomano (Teramo) ITALY
Tel. +39 0861 590221 / 2 - Fax +39 0861 590433
info@ltform.it - www.ltform.it



TESSUTI E RIVESTIMENTI
UPHOLSTERY OPTIONS

CATEGORIA/CATEGORY B
TESSUTO POLIPROPILENE IGNIFUGO



B23 Arancione
 Reazioni al fuoco - Fire resistance*:
 UNI 9175 Class 1
 BS 5852 Crib N°5
 EN 1021 Part 1-2
 Calif. Bull. 117 June 2013
 *Will also pass other flammability standards.
 Flame retardant performance is dependent upon the foam used.

B28 Rosso
B26 Bordeaux
B22 Verde chiaro
B21 Verde

B27 Blu
B20 Blu scuro
B30 Grigio
B25 Grigio scuro

Composizione - composition:
 100% Polipropilene FR - polypropylene FR

Peso - weight:
 350 ± 5% g/lm

Martindale:
 >50.000 cicli - cycles

B18 Nero

CATEGORIA/CATEGORY B
COVENTRY



B33 Beige
 Reazioni al fuoco - Fire resistance*:
 UNI 9175:1987
 UNI 9175-FA 1:1994
 BS 5852-1:1979
 BS5852-2:1979
 EN 1021:2014
 *Will also pass other flammability standards.
 Flame retardant performance is dependent upon the foam used.

B11 Terra
B12 Giallo
B13 Rosso
B14 Bordeaux

B15 Verde scuro
B16 Blu
B17 Grigio
B19 Bianco

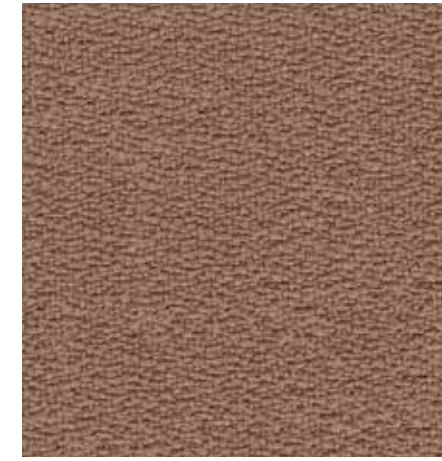
Fireproof version
 Composizione - composition:
 82% PVC
 7 % Cotone - cotton
 11% Poliestere - polyester

Peso - weight:
 565 g/m² ± 5%

Martindale:
 > 50.000 Cicli - cycles

B32 Nero

CATEGORIA/CATEGORY C
TESSUTO CREP MIRAGE

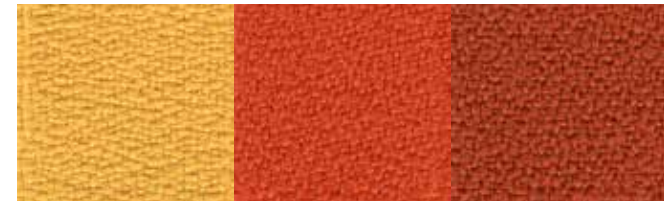


C01 Terra
 Reazioni al fuoco - Fire resistance*:
 UNI 9175 Class 1
 EN ISO 6940/6941:
 BS 5852 Crib N°5
 B1 DIN 4102
 EN 1021 Part 1-2
 EN 13773 Burning Behaviour: Class 1
 EN 13501-1 esp 1,2
 Calif. Bull. 117 June 2013
 Fire Protection Classification: 5.3
 FAR 25853 Classification: yes
 M1 + NF D 60-013:2006 AM18
 B1 + OENORM 3800 PART 1 + OENORM B3825
 Azimut
 MED/3.19 MED/3.21: Draperies, Curtains and Bedding comp.
 MED annex A.1 item:A.1/3.20 Upholstered Furniture
 *Will also pass other flammability standards.
 Flame retardant performance is dependent upon the foam used.

Composizione - composition:
 100% Poliestere FR (trevira CS) - polyester

Peso - weight:
 460 ± 10% g/lm

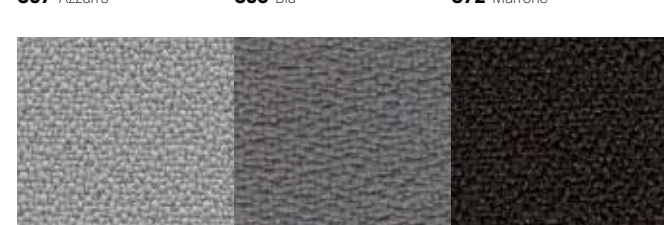
Martindale:
 100.000 ± 20% Cicli - cycles



C02 Giallo
C03 Arancio
C05 Mattone



C04 Amaranzo
C20 Prugna
C21 Bordeaux

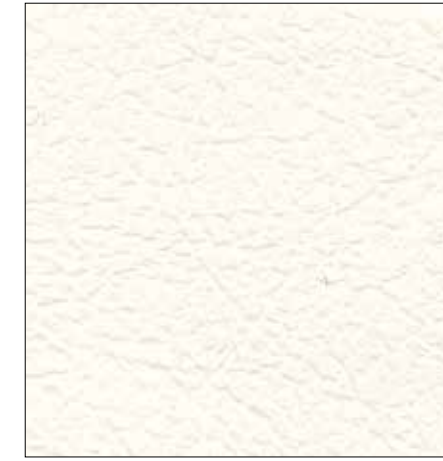


C07 Turchese
C71 Verde chiaro
C06 Verde scuro



C73 Grigio chiaro
C09 Grigio
C10 Nero

CATEGORIA/CATEGORY C
HAPPY

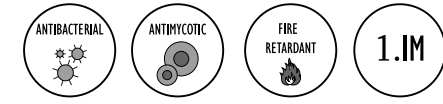


C22 Bianco/White
 Reazioni al fuoco - Fire resistance*:
 UNI 9175:1987
 UNI 9175-FA1:1994
 IMO RES A 652 (16):1989
 FTP CODE Annex 1 Part 8
 *Will also pass other flammability standards.
 Flame retardant performance is dependent upon the foam used.

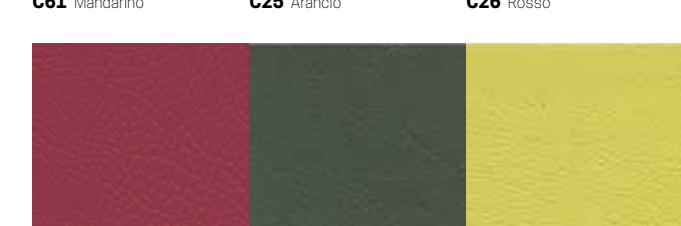
Composizione - composition:
 88% PVC
 12% poliestere - polyester

Peso - weight:
 550 ± 50 g/mq

Martindale:
 50.000 cicli - cycles



C23 Beige
C24 Terra
C64 Amaranzo



C61 Mandarino
C25 Arancio
C26 Rosso



C50 Bordeaux/Bordeaux
C60 Verde/Green
C62 Lime/Lime



C28 Blu/Blue
C29 Grigio/Gray
C74 Blu scuro



C63 Grigio chiaro
C30 Grigio scuro
C31 Nero

RETE/NET I



ID Grigio scuro
IG Grigio chiaro
IN Nero
IV Verde
IT Turchese

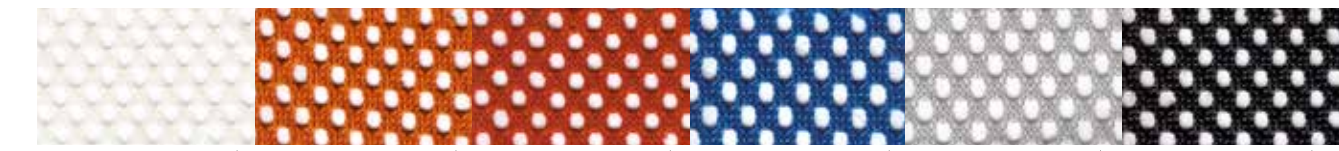
Reazioni al fuoco - Fire resistance*:
 UNI 9175 Class 1
 *Will also pass other flammability standards.
 Flame retardant performance is dependent upon the foam used.

Composizione - composition:
 100% poliestere - polyester

Peso - weight:
 540 g/mq

Martindale:
 60.000 cicli - cycles

RETE/NET P



PW Bianco
PA Arancio
PR Rosso
PB Blu
PG Grigio
PN Nero

Reazioni al fuoco - Fire resistance*:
 UNI 8457(1987)-UNI 8457/A1(1996)
 UNI 9174(1987)-UNI 9174/A1(1996)
 EN 1021 Part 1-2
 *Will also pass other flammability standards.
 Flame retardant performance is dependent upon the foam used.

Composizione - composition:
 100% poliestere - polyester

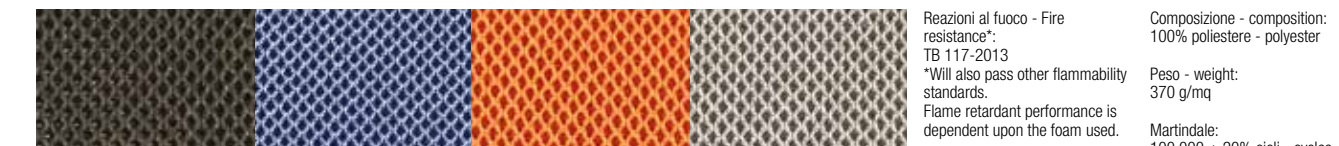
Peso - weight:
 495 ± 10% g/lm

Martindale:
 100.000 ± 20% cicli - cycles



PV Verde
PS Sabbia
PM Marrone
PD Blu scuro
PP Piombo

RETE/NET M - RETE/NET ACCENTO



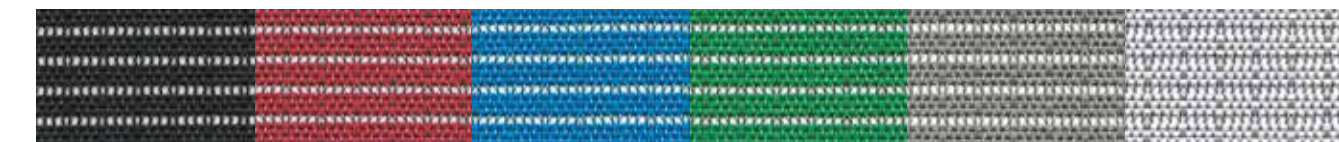
Reazioni al fuoco - Fire resistance*:
 TB 117-2013
 *Will also pass other flammability standards.
 Flame retardant performance is dependent upon the foam used.

Composizione - composition:
 100% poliestere - polyester

Peso - weight:
 370 g/mq

Martindale:
 100.000 ± 20% cicli - cycles

RETE/NET NIMBUS



NN Nero
NR Rosso
NB Blu
NV Verde
NG Grigio
NS Bianco

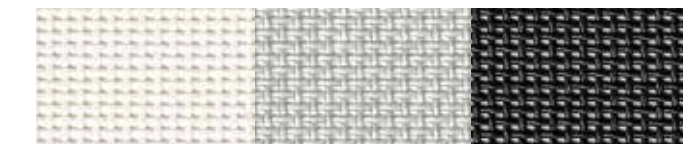
Reazioni al fuoco - Fire resistance*:
 TB 117-2013
 *Will also pass other flammability standards.
 Flame retardant performance is dependent upon the foam used.

Composizione - composition:
 70% nylon - nylon
 30% poliestere - polyester

Peso - weight:
 420 g/mq

Martindale:
 100.000 cicli - cycles

RETE/NET ARGENTA



UW Bianco
UG Grigio
UN Nero

Composizione - composition:
 77% PVC - PVC
 23% PES - PES

Peso - weight:
 560 g/mq

Martindale:
 >100.000 cicli - cycles

CATEGORIA/CATEGORY L
CAPTURE BY GABRIEL



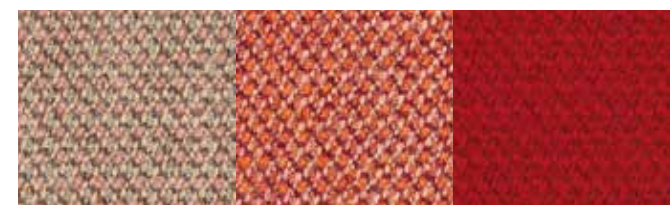
L16 Prugna

Reazioni al fuoco - Fire resistance*:
 UNI 9175 Class 1
 BS EN 1021 1&2
 BS 5852 Part 1 0,1
 CA TB 117-2013
 *Will also pass other flammability standards.
 Flame retardant performance is dependent upon the foam used

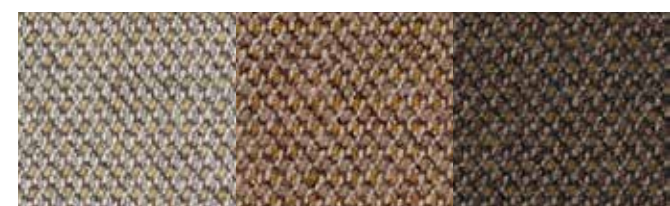
Composizione - composition:
 85% lana della Nuova Zelanda - New Zealand wool
 15% poliammide - polyamide

Peso - Weight
 475g/lm

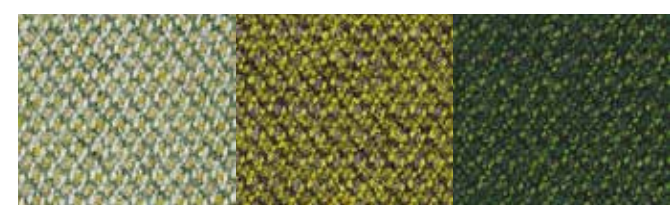
Martindale: 200.000 cicli - cycles



L01 Salmone **L03** Arancio **L03** Rosso



L04 Sabbia **L05** Caramello **L06** Noce



L07 Salvia **L08** Salvia **L09** Abete



L10 Cielo **L11** Indaco **L12** Denim



L13 Grigio chiaro **L14** Grigio scuro **L15** Carbone

CRO MA TI CA



Zona Industriale 64046 Montorio al Vomano (Teramo) ITALY
 Tel. +39 0861 590221 / 2 - Fax +39 0861 590433
 info@ltform.it - www.ltform.it

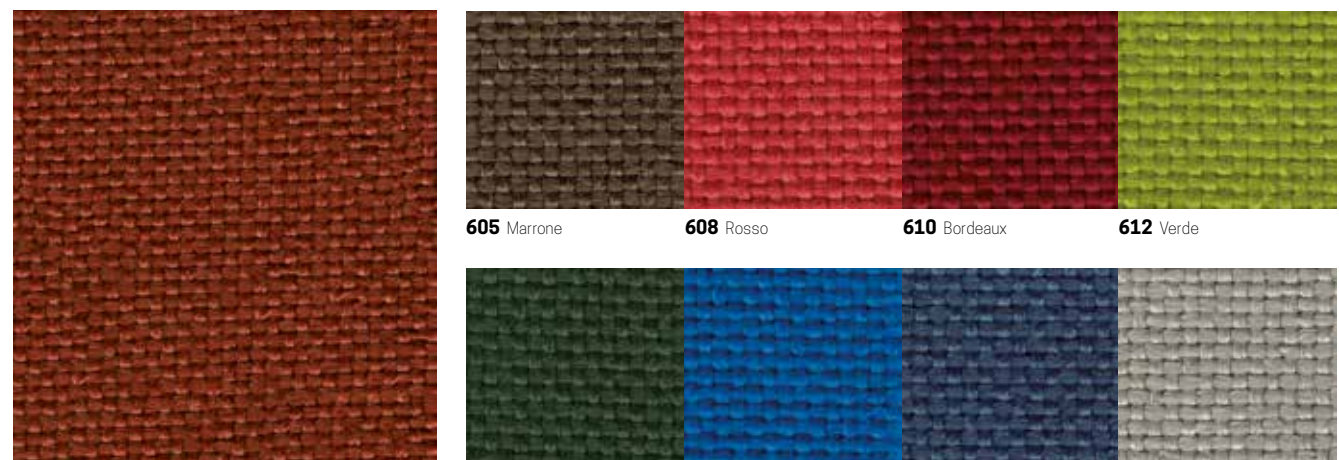


TESSUTI E RIVESTIMENTI
 UPHOLSTERY OPTIONS

COLORI E MATERIALI PER DARE STILE AL TUO SPAZIO
 COLOURS AND MATERIALS TO GIVE STYLE TO YOUR SPACE



CATEGORIA/CATEGORY E
TREVI U



618 Mattone

Reazioni al fuoco - Fire resistance*:
UNI 9175 Class 1
M1
BS 5852 Crib N°5
B1 DIN 4102
EN 1021 Part 1-2
EN 13501-1 esp. 1,2
Calif. Bull.117, June 2013
FAR.25853 Classification: yes
Azimut
MED/3.19 MED/3.21: Draperies, Curtains and Bedding comp.
MED annex A.1 item A.1/3.20 Upholstered Furniture

605 Marrone **608** Rosso **610** Bordeaux **612** Verde

*Will also pass other flammability standards.
Flame retardant performance is dependent upon the foam used.

Composizione - composition:
100% poliestere FR- polyester FR (Trevira CS)

Peso - weight: 630 ± 5% g/lm

Martindale: 1 50.000 ± 20% cicli - cycles

607 Verde scuro **604** Blu **602** Blu scuro **606** Grigio

Composizione - composition:
100% poliestere FR- polyester FR (Trevira CS)

Peso - Weight:
600 ± 5% g/lm

Martindale:
75.000 ± 10% cicli - cycles

600 Grigio scuro

CATEGORIA/CATEGORY E
FENICE



E01 Sabbia

Resistenza al fuoco - fire resistance*:
UNI9175 Class 1
BS 5852 Crib N° 5
EN 1021/1-2
Calif.Bull.117, June 2013
*Will also pass other flammability standards.
Flame retardant performance is dependent upon the foam used.

Composizione - composition:
75% lana - wool
25% poliammide - polyamide

E02 Giallo **E03** Arancio **E04** Rosso **E05** Bordeaux

Peso - weight:
500 ± 7% g/lm

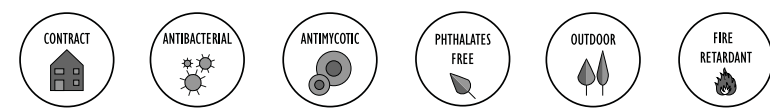
Martindale:
1 00.000 ± 20% cicli - cycles

E06 Marrone **E07** Mattone **E08** Blu **E09** Grigio

Composizione - composition:
84% PVC
16% cotone - cotton

E10 Nero

CATEGORIA/CATEGORY E
ALL ROAD



E78 Panna

Resistenza al fuoco - fire resistance*:
UNI9175 Class 1
EN1021/1 - 2
BS 5852 Crib N° 5
*Will also pass other flammability standards.
Flame retardant performance is dependent upon the foam used.

Composizione - composition:
84% PVC
16% cotone - cotton

E69 Sabbia **E70** Giallo **E71** Rosso **E72** Bordeaux

Peso - weight:
120 g/lm ± 5%

Martindale:
≥150.000 cicli - cycles

E73 Olive **E74** Blu **E75** Blu scuro **E76** Grigio

E77 Nero

CATEGORIA/CATEGORY G
CLASS BY FIDIVI



G53 Casablanca

Resistenza al fuoco - fire resistance*:
UNI 9175 Class 1
UNI 9174 - 8456 Class C1
DIN 4102 Class B1
NF 92501-7 Class M1
NF D 60013 Class AM18
EN 1021-1 & 2
BS Crib 5
BS 7176 Class Medium Hazard
EN 13773 Class 1
OENORM 3800-1 Class B1, Q1, TR1
California TB117

*Will also pass other flammability standards.
Flame retardant performance is dependent upon the foam used.

Composizione - composition:
100%Poliestere (Trevira CS) - polyester

Peso - Weight:
600 ± 5% g/lm

Martindale:
75.000±10% cicli - cycles

G70 Dubai **G61** Abu Dhabi **G60** Moscow **G71** Yoshino

Composizione - composition:
100%Poliestere (Trevira CS) - polyester

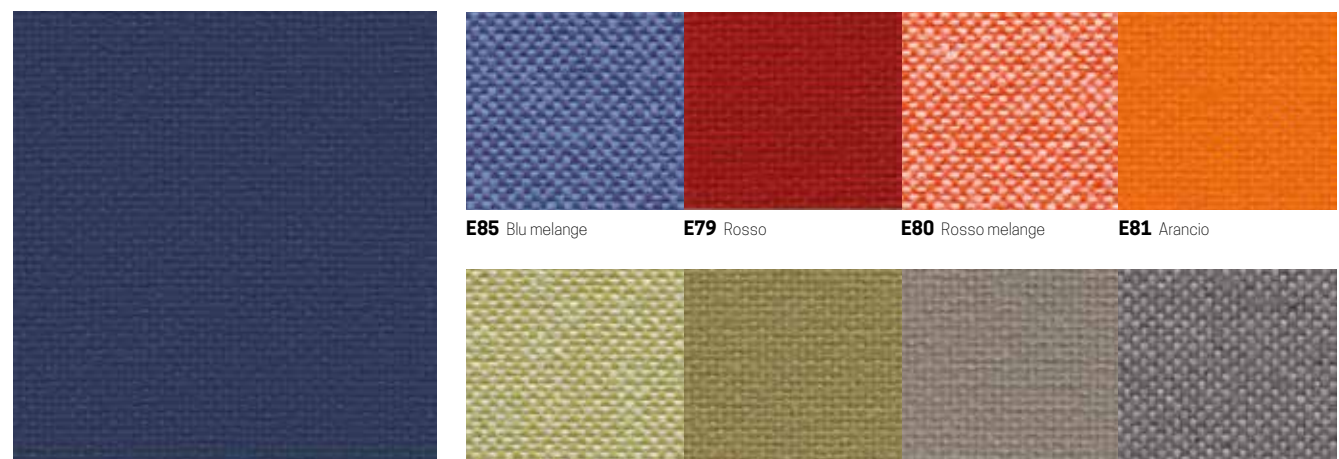
Peso - Weight:
600 ± 5% g/lm

Martindale:
75.000±10% cicli - cycles

G58 London **G72** Ibiza **G64** Dublin **G55** Seattle

G69 Milano

CATEGORIA/CATEGORY E
JET



E85 Blu

Reazioni al fuoco - Fire resistance*:
UNI 9175 Class 1
UNI 9174 - 8456 Class C1
DIN 4102 Class B1
NF 92501-7 Class M1
NF D 60013 Class AM18
EN 1021-1 & 2
BS Crib 5
BS 7176 Class Medium Hazard
EN 13773 Class 1
OENORM 3800-1 Class B1, Q1, TR1
California TB117
USA NFPA 701

E82 Verde melange **E83** Verde oliva **E33** Sabbia **E84** Grigio

USA NFPA 260
IMO Part 8 Upholstery
*Will also pass other flammability standards.
Flame retardant performance is dependent upon the foam used.

Composizione - composition:
100%Poliestere (Trevira CS) - polyester

Peso - Weight:
365 ± 5% g/lm

Martindale:
65.000 ± 10% cicli - cycles

E79 Rosso **E80** Rosso melange **E81** Arancio

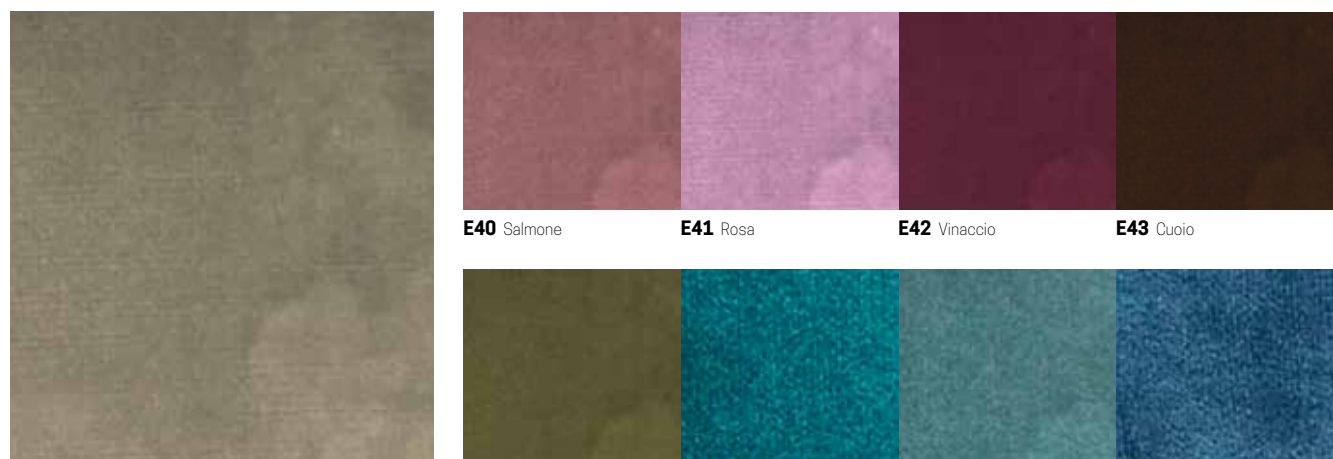
Composizione - composition:
100%Poliestere (Trevira CS) - polyester

Peso - Weight:
365 ± 5% g/lm

Martindale:
65.000 ± 10% cicli - cycles

E39 Nero

CATEGORIA/CATEGORY E
LOVE



E68 Champagne

Resistenza al fuoco - fire resistance*:
BS 5852 PART1
EN 1021-1
*Will also pass other flammability standards.
Flame retardant performance is dependent upon the foam used.

Composizione - composition:
100%Poliestere - polyester

E44 Terra **E45** Petrolio **E46** Zaffiro **E47** Oceano

Peso - weight:
520 g/lm

Martindale:
>100.000 cicli - cycles

E40 Salmone **E41** Rosa **E42** Vinaccio **E43** Cuoio

Composizione - composition:
70% cotone - cotton
20% acrilico - acrylic

E48 Grigio chiaro **E49** Blue chiaro

CATEGORIA/CATEGORY G
DISCO COEX BY CHIOCCARELLO



G94 Panna

Resistenza al fuoco - fire resistance*:
UNI 9175 Class 1
EN 1021-1:2006
EN 1021-2:2006
CRIB 5
TB 117:2013
IMO
*Will also pass other flammability standards.
Flame retardant performance is dependent upon the foam used.

Composizione - composition:
70% cotone - cotton
20% acrilico - acrylic

G85 Muschio **G86** Petrolio **G87** Denim **G88** Fucsia

5% viscosa - viscose
5% lino - linen

Peso - weight:
430 g/m² ± 15

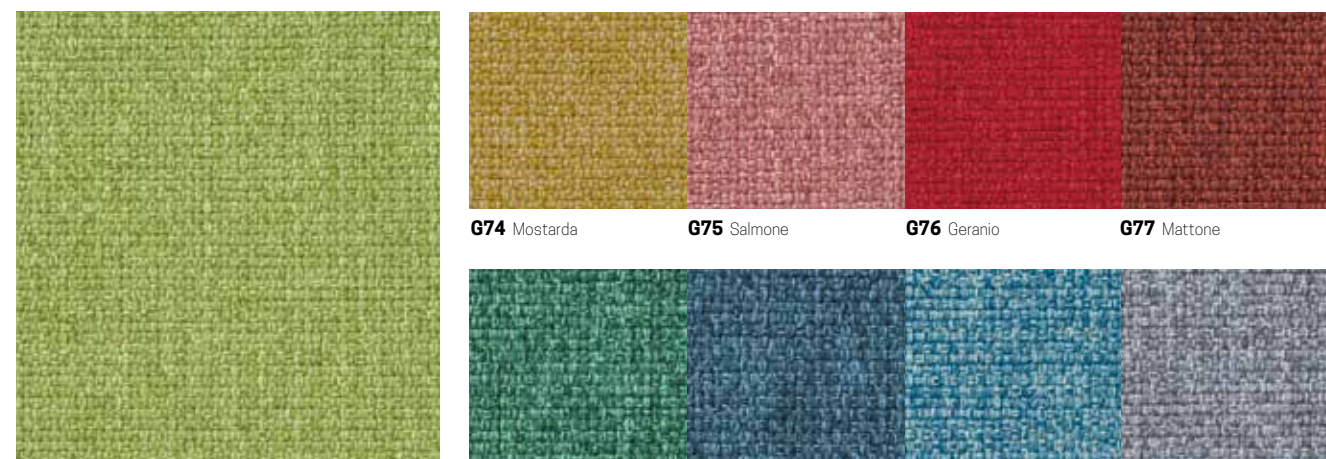
Martindale:
50.000 cicli - cycles

G89 Sabbia **G90** Terra **G91** Grigio chiaro **G92** Grigio scuro

COEX® è l'unica tecnologia brevettata 100% naturale, basata sulla molecola della cellulosa, che rende totalmente ignifuga qualsiasi fibra di origine vegetale.

G93 Carbone

CATEGORIA/CATEGORY G
MEDLEY BY GABRIEL



G73 Lime

Resistenza al fuoco - fire resistance*:
BS EN 1021 1&2
BS EN 1021-1
BS 476 Part 7, class 2
Class Uno UNI 9174 - UNI 8457
ONORM A3800-B2-B3825-Q1 UK
CA TB 117-2013
ASTM E 84 Class 1
*Will also pass other flammability standards.
Flame retardant performance is dependent upon the foam used.

Composizione - composition:
100%Poliestere - polyester

Peso - Weight:
510 g/lm

Martindale:
75. 000 cicli - cycles

G74 Mostarda **G75** Salmone **G76** Geranio **G77** Mattone

Composizione - composition:
100%Poliestere - polyester

Peso - Weight:
510 g/lm

Martindale:
75. 000 cicli - cycles

G78 Verde smeraldo **G79** Petrolio **G80** Cielo **G81** Fumo

G83 Carbone