

**NAME:**

CUT-OUT baffle

**DESCRIPTION:**

Thermobonded sound-absorbing monomateric panel

**APPLICATION**

- Suspended with cables
- Freestanding

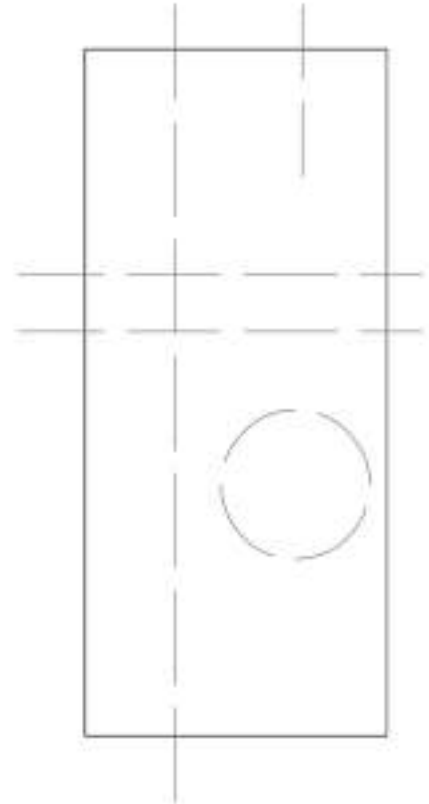
**STANDARD DIMENSIONS:**



**XL DIMENSIONS:**



**CUSTOMIZED CUT:**



**DIMENSIONS:**

- L 120 x H 195 x THK  $\pm 0,8$  cm - L 47.25 x H 76,77 x THK  $\pm 0.32$  in
- L 120 x H 245 x THK  $\pm 0,8$  cm - L 47.25 x H 96.45 x THK  $\pm 0.32$  in

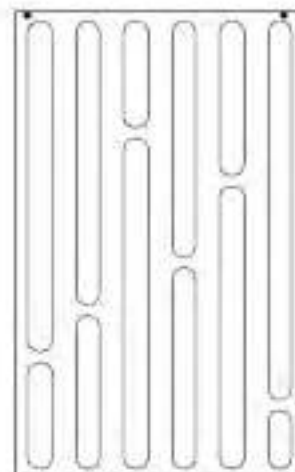
NOTE: *Laser cuts can be made with customized dimensions*



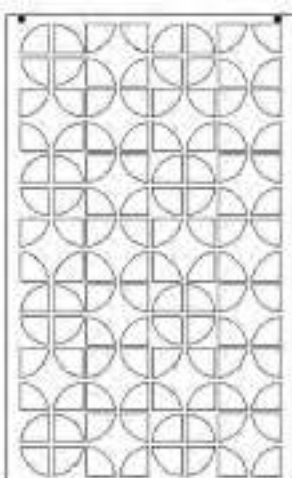
**MONSTERA**



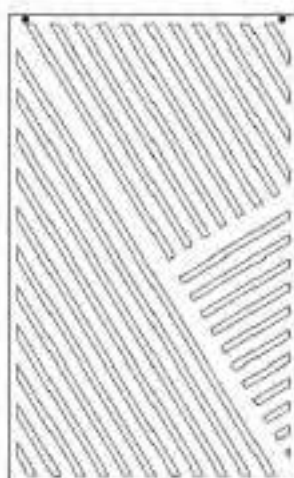
**BUBBLE**



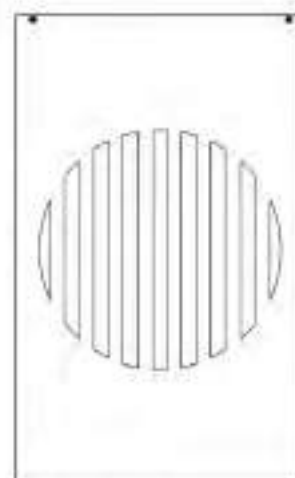
**STRIPES**



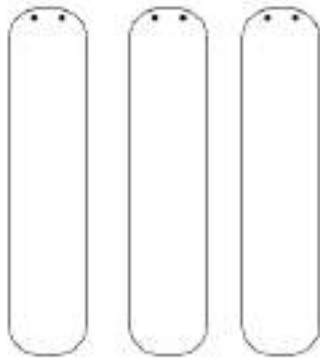
**MOSAIC**



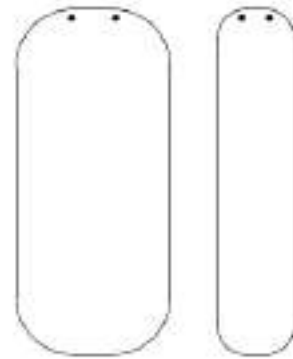
**OBLIQUE STRIPES**



**HINOMARU**



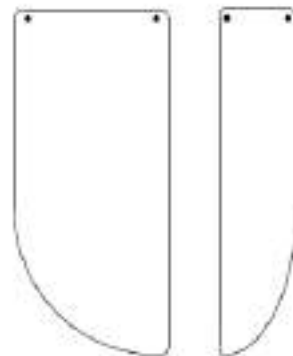
OV1-40.180/3



OV2-40.80.180



VE2-40.100/2



VE1-40.80.180



VE3-80.120/2

## COMPOSITION:

- Main core: Sound-absorbing material made of 100% recycled material, polyester

fibers Reaction to fire: B-s2, d0

Smoke class: F1

Certificate: Oekotex

- Finishing CAT **A**:
  - **Trevira CS** - 100% polyester  
Reaction to fire: **Class 1**  
Certificate: **Oekotex**
  - **PETfabric** – 100% recycled polyester  
Reaction to fire: **Class 1**  
Certificate: **Oekotex**
  - **PETcolor** - 100% PET, FR recycled polyester + GRS  
Reaction to fire: **Class 1**
  - **ECOfelt** - 90% wool, 10% polyester
  - **PETfelt** - 100% PET – From post-consumer plastic bottles
  - **Velvet** - 100% polyester
- Finishing CAT **B**:
  - **Tweed** - 75% wool, 25% polyamide  
Reaction to fire: **Class 1**
  - **Bouclè** - 100% PL recycled SEAQUAL  
Reaction to fire: **Class 1**  
Certificate: **Oekotex**

## RECYCLABILITY:

Recyclable material panel recyclable at the end of his life, without having to divide soul and finishing

**MAINTENANCE:**

Cleanable panel with specific detergents

**CERTIFICATIONS:**

• **FIRE REACTION CLASS:**

B-s2, d0



• **CE MARK:**

B-s1, d0



• **GREEN LABELS:**

GREENGUARD  
GREENGUARDGOLD



• **VOC EMISSION TEST**

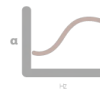
Indoor Air Comfort GOLD



• **SOUND ABSORPTION REPORT:**

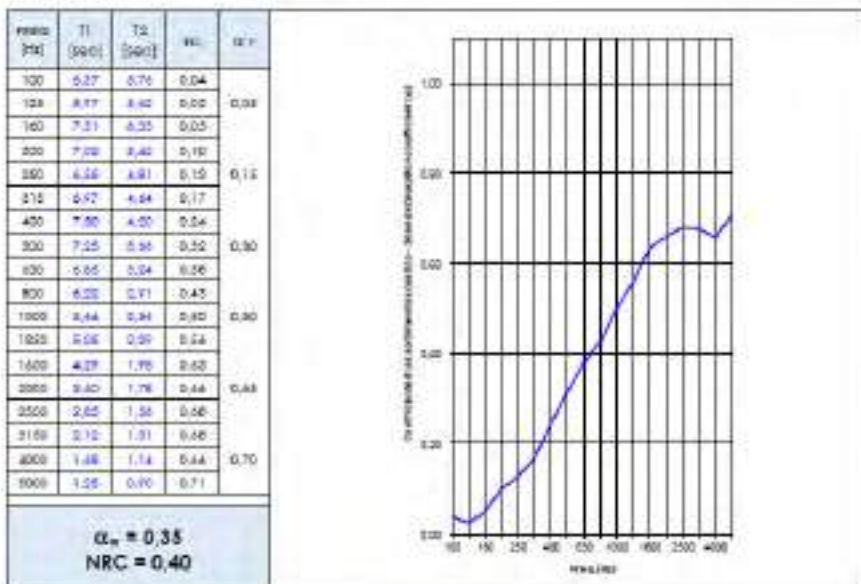
UNI EN ISO 354: 2003

UNI EN ISO 11654: 1998



## BAFFLE XL:

Elemento in prova Tested element	Pannelli descritti nelle pagine da 4 a 14 Panels described at pages 4 to 14
Descrizione del campione Sample description	Vedere § "Descrizione del campione in prova" del presente Report. Montaggio tipo A secondo EN 354 / See § "Tested sample description" of this Report. Type A mounting according to EN 354
Superficie del campione Sample surface	13.21 m <sup>2</sup>



**THICKNESS**  
gr / mtl 460 ± 10%

**WIDTH**  
cm 140 ± 2% | " 55 ± 2%



# Trevira CS.



Light grey 611T    Moka 516    Beige 532    Camel 533    Tuscan brown 534    Brown sugar 569



Yellow 53    Carrot 66    Tiger eye 119    Summer 133    Brick 572    Orange 120



Red 231    Bordeaux 236    Red wine 234    Lavender 175    Fuchsia 173    Purple 262



Lime 462    Green tea 425    Apple Green 463    Office green 443    Grass 464    Olive 426



Forest green 496    Dark mud 571    Pearl grey 643    Light blue 386    Azuleja 367    Capri 379



Turquoise 366    Peacock blue 411    Pastel blue 380    Steel blue 263    Iceberg 377    Queen blue 378



Sapphire 331    Office blue 332T    Dark blue 334T    Midnight blue 333T    Quartz grey 636    Grey 629



Old silver 625    Taupe 607    White 999    Black 651





**THICKNESS**  
gr / mtl 470 ± 10%

**WIDTH**  
cm 140 ± 2% | " 55 ± 2%



# PETfabric.



**THICKNESS**  
gr / mtl 470 ± 10%

**WIDTH**  
cm 140 ± 2% | " 55 ± 2%



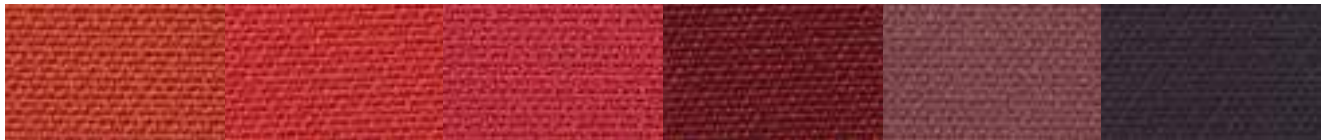
# PETcolor.



White 2999    Milk 2509    Beige 2503    Camel 2504    Deer 2510    Sierra 2557



Yellow 2051    Orange 2104    Papaya 2103    Red 2201    Mud 2552    Dark chocolate 2556



Brick 2555    Palazzo red 2206    Ossalide 2151    Bordeaux 2203    Malva 2251    Blueberry 2252



Pistachio 2451    Green leaf 2452    Forest 2459    Peacock 2402    Sugar 2357    Pouder 2358



Ice 2612    Light blue 2351    Greece 2308    Van Gogh 2301    Midnight 2309    Blue romance 2303



Grey 2602    Infinity 2307    Rock Grey 2603    City grey 2604    Black 2651



**THICKNESS**  
mm 1,5 | gr/mtl 420

**WIDTH**  
cm 150 ± 5% | " 59 ± 5%



# ECOfelt.



Ghost white 955E   Chalk 327   Grey 953E   Concrete 903   Ink 329   Dark grey 923



Beige 952   Caramel 332E   Mushroom 325   Chocolate 352   Taupe 511   Brown 605



Yellow 34   Egg 980   Mustard 54   Cob orange 997   Orange 971   Salmon 317



Red 5   Rust 604   Pompei 47   Bordeaux 192   Marsala 973   Quartz rose 940



Bubble pink 53   Pink 988   Mauve 601   Agate 919   Violet 921   Purple 508



Barolo 602   Grape 603   Acid green 611E   Cashmere green 89   Grassland 937   Tea Green 345



Leaf Green 910   Black forest 77   Dark musk 22E   Fresh air 976   Salvia green 334E   Mineral Blue 311



Lagoon 608   Peacock blue 962   Biggest Splash 41   Capri 341   Avio 333E   Moonstone 512



Azuleja 318   Light blue 914   Blue yonder 200   Honolulu blue 607   Blue 193   Deep sea blue 963



Nymph 972

**THICKNESS**  
mm 1,5 | gr/mtl 420

**WIDTH**  
cm 150 ± 5% | ” 59 ± 5%



# PETfelt.



Ash 703      Fog 953P      Milk 955P      Beige 16      Tuscan brown 20      Mud 19



Pale yellow 41      Alabaster 32      Yellow 3      Duck Orange 43      Orange 9      Dark Orange 14



Red 6      Ruby red 27      Bordeaux 15      Pastel pink 37      Pink 17      Wisteria pink 36



Barbie 113      Fuchsia 10      Sangria 30      Grapes 23      Purple 11      Raspberry 47



Opal 33      Celadon 39      Water green 2      Kiwy 28      Acid green 7      La salle green 12



Jungle green 31      Grey green 22      Egg blue 38      Light blue 8      Blue 13      Azure 1



Summer night 21      Charm blue 44      Pacific blue 29      Dark blue 5      Midnight 905      Rhino 903



Grey 4      Street 529      Rich black 18



**THICKNESS**  
gr / mtl 420

**WIDTH**  
cm 145 ± 2% | " 57



# Velvet.



Beige 104

Mauve 23V

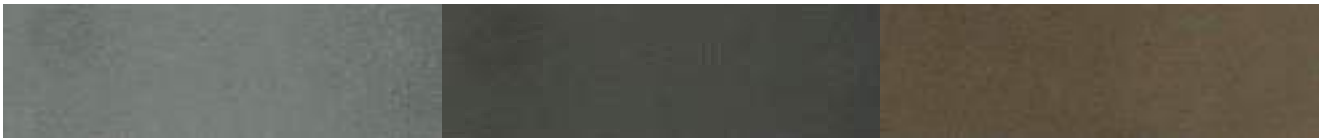
Marsala 80



Yellow 26

Cherry 10V

Bordeaux 90



Taupe 205

Graphite 617

Brown 100



Bright green 12V

Salvia green 56

Lagoon 15V



Grey 616

Avio 16V

Deep sea blue 14V



Dark blue 666



**THICKNESS**  
gr / mtl 500 ± 7%

**WIDTH**  
cm 150 ± 5% | ” 59 ± 5%



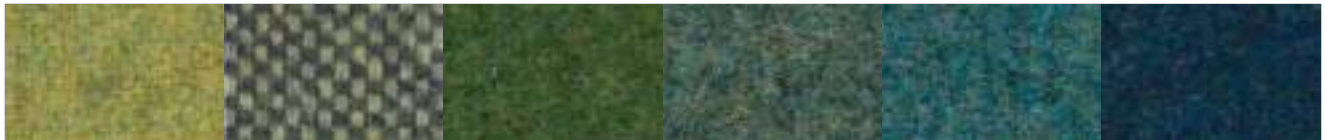
# Tweed.



Almond 505    Sand 502    Rose 503    Brown 504    Coffee 551    Chestnut 552



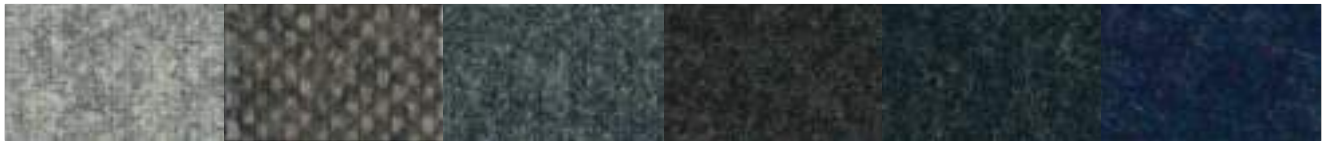
Banana 51    Dark gold 52    Mandarin 102    Cadmium 101    Orange 2105    Terra di Siena 103



Pistachio 451    Pond 2457    Foliage 452    Racing green 453    Teal blue 454    Blue 303



Aqua green 455    Air blue 351    River 2460    Grey blue 301    Orchid 251    Purple 252



Ash grey 601    Melting grey 2606    Rock grey 602    Old brown 553    Dark grey 603    Night blue 302



Pink 152    Red 211    Antique ruby 201    Berry 202    Full black 651



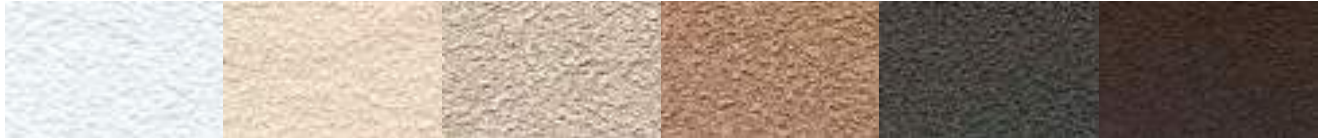


## COMPOSITION

100% PL riciclato SEAQUAL  
100% PL Recycled SEAQUAL



# Bouclè.



Snowflake 999B

Champagne 503B

Cookie 501

Oak 502B

Graphite 604B

Terrarium 553



Star 51B

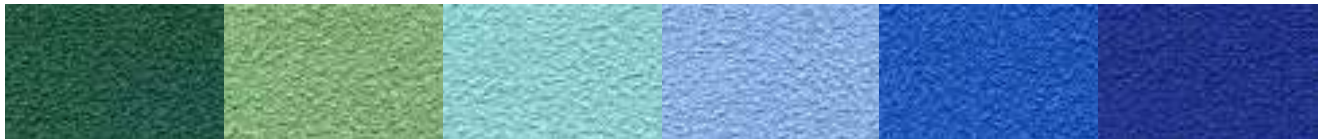
Anemone 101B

Klinker 552B

Hibiscus 202B

Aloe 453B

Pothos 452B



Zen garden 454B

Mermaid 451B

Aquamarine 401

Cloud 351B

Bubble 301B

Iris 303B



Sailor 304

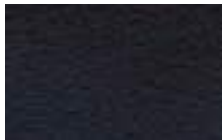
Pearl 601B

Cliff 602B

Mademoiselle 151

Peony 251

Plum 252B



Obsidian 651B

